

Central Bank of Myanmar
Market Discount Rates at the Government of the Union of Myanmar Treasury Bill Auction
January 2015 to September 2019

Month	3 months	6 months	12 Months
Jan, 15	8.000%		
Feb, 15	8.150%		
Feb, 15	8.150%		
Mar, 15	8.000%		
Mar, 15	7.500%		
May, 15	7.750%		
May, 15	7.500%		
Jun, 15	7.250%		
Jun, 15	7.000%		
July, 15	7.000%		
Aug, 15	7.400%		
Aug, 15	7.400%		
Sept, 15	7.633%		
Sept, 15	7.730%		
Oct, 15	7.900%		
Oct, 15	7.532%		
Nov, 15	7.900%		
Nov, 15	8.100%		
Dec, 15	8.100%		
Dec, 15	8.114%		
Jan, 16	8.118%		
Jan, 16	8.142%		
Feb, 16	8.200%		
Feb, 16	8.190%		
Mar, 16	8.187%		
Mar, 16	8.179%		
Apr, 16	8.160%		
Apr, 16	7.950%		
May, 16	7.707%	8.000%	
May, 16	7.275%	7.500%	
June, 16	7.278%	7.500%	
June, 16	7.214%	7.512%	
July, 16	7.196%	7.512%	8.500%
July, 16	7.374%	7.538%	8.506%
Aug, 16	7.139%	7.480%	8.500%
Aug, 16	7.118%	7.437%	8.500%
Aug, 16	7.191%	7.421%	8.550%
Sept, 16	7.440%	7.750%	8.500%
Oct, 16	7.844%		
Oct, 16	7.307%	8.000%	8.540%
Nov, 16	7.238%	7.936%	8.455%
Nov, 16	7.764%	8.200%	8.623%
Nov, 16	7.786%	8.187%	8.600%
Dec, 16	7.892%		8.632%
Jan, 17	7.899%		
Jan, 17	7.899%		

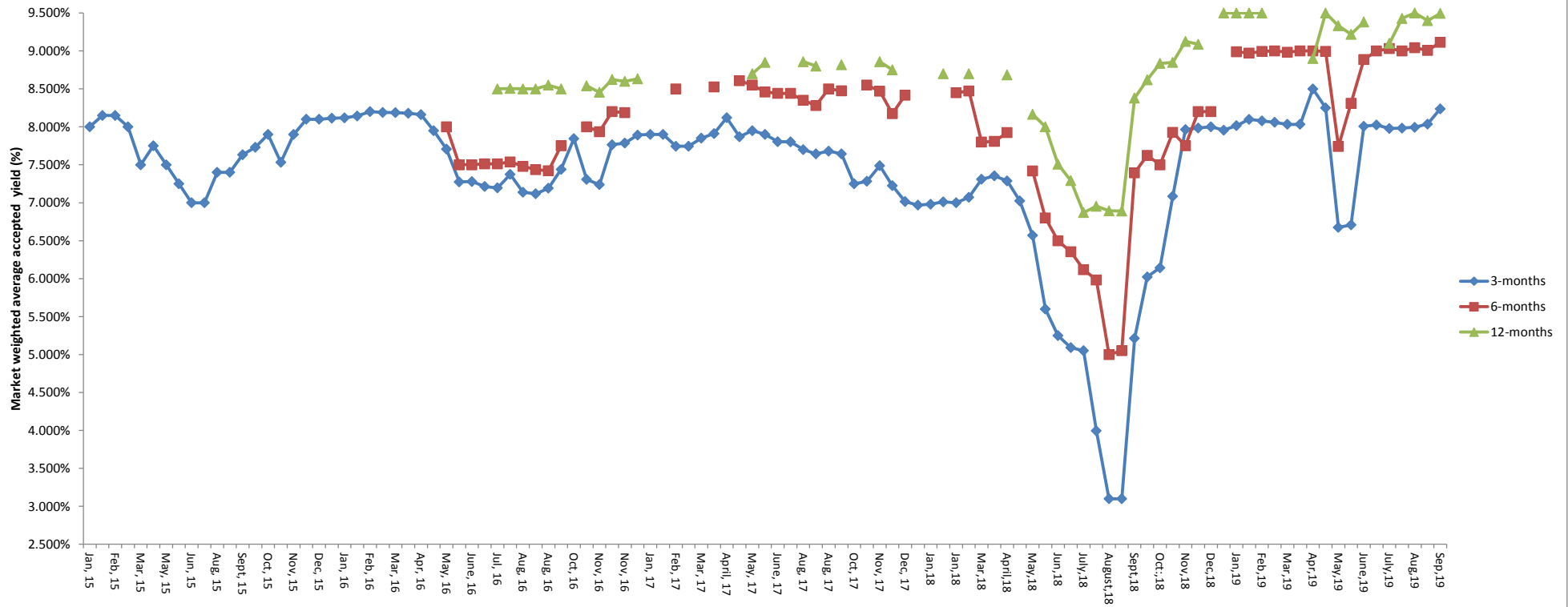
Central Bank of Myanmar
Market Discount Rates at the Government of the Union of Myanmar Treasury Bill Auction
January 2015 to September 2019

Month	3 months	6 months	12 Months
Feb, 17	7.745%	8.500%	
Feb, 17	7.745%		
Mar, 17	7.850%		
Mar, 17	7.912%	8.525%	
April, 17	8.120%		
May,17	7.869%	8.609%	
May, 17	7.950%	8.550%	8.700%
May, 17	7.901%	8.459%	8.850%
June,17	7.804%	8.441%	
July,17	7.801%	8.447%	8.879%
Aug, 17	7.700%	8.350%	8.858%
Aug, 17	7.644%	8.282%	8.800%
Aug, 17	7.679%	8.500%	
Sept,17	7.645%	8.475%	8.817%
Oct,17	7.250%		
Oct,17	7.282%	8.550%	
Nov,17	7.487%	8.470%	8.858%
Nov,17	7.226%	8.174%	8.750%
Dec,17	7.015%	8.417%	
Dec,17	6.969%		
Jan,18	6.981%		
Jan,18	7.012%		8.700%
Jan,18	7.000%	8.450%	
Feb,18	7.072%	8.472%	8.700%
Mar, 18	7.313%	7.800%	
Mar, 18	7.354%	7.809%	
April, 18	7.288%	7.924%	8.684%
May, 18	7.025%		
May, 18	6.570%	7.419%	8.166%
May, 18	5.600%	6.800%	8.000%
June, 18	5.250%	6.500%	7.508%
July, 18	5.090%	6.354%	7.291%
July, 18	5.050%	6.119%	6.870%
August,18	3.995%	5.983%	6.953%
August, 18	3.100%	5.000%	6.893%
September, 18	3.100%	5.050%	6.890%
September, 18	5.214%	7.394%	8.379%
October, 18	6.023%	7.623%	8.620%
October, 18	6.143%	7.500%	8.835%
November, 18	7.085%	7.927%	8.850%
November, 18	7.964%	7.750%	9.125%
December, 18	7.985%	8.200%	9.087%
December, 18	8.000%	8.200%	
January,19	7.956%		9.500%
January,19	8.016%	8.990%	9.499%
February,19	8.098%	8.972%	9.500%

Central Bank of Myanmar
Market Discount Rates at the Government of the Union of Myanmar Treasury Bill Auction
January 2015 to September 2019

Month	3 months	6 months	12 Months
February,19	8.078%	8.994%	9.500%
March,19	8.060%	9.000%	
March,19	8.033%	8.983%	
April, 19	8.033%	9.000%	
April, 19	8.500%	9.000%	8.900%
May, 19	8.250%	8.993%	9.500%
May, 19	6.675%	7.742%	9.332%
June, 19	6.708%	8.311%	9.219%
June, 19	8.008%	8.887%	9.381%
July, 19	8.025%	9.000%	
July, 19	7.979%	9.032%	9.100%
Aug, 19	7.983%	9.001%	9.429%
Aug, 19	7.993%	9.042%	9.499%
Sep, 19	8.037%	9.008%	9.400%
Sep, 19	8.237%	9.113%	9.495%

Central Bank of Myanmar
Market Discount Rates at the Government of the Union of Myanmar Treasury Bill Auction
January 2015 to September 2019



Central Bank of Myanmar

**Market Weighted Average Discount Rates at the Government of the Union of Myanmar
Treasury Bill Auction**

2019 October to 2020 July

Month	3 months	6 months	12 Months
Oct, 19	8.208%	9.150%	9.500%
Oct, 19	8.137%	9.046%	9.428%
Nov, 19	8.237%	9.045%	
Nov, 19	8.200%	8.982%	9.394%
Dec, 19	8.006%	8.897%	9.394%
Dec, 19	7.986%	8.888%	9.450%
Jan,20	8.024%	8.948%	9.465%
Jan,20	8.087%	8.906%	9.489%
Feb,20	8.045%	8.916%	9.487%
Feb,20	8.000%	8.900%	9.495%
Mar,20	8.039%		9.416%
Mar,20	8.059%		9.498%
Apr,20	7.894%	8.481%	9.230%
May,20	7.093%	7.635%	8.358%
May,20	7.056%	7.628%	8.207%
June,20	6.845%	7.435%	8.037%
June,20	6.561%	7.499%	8.068%
July,20	7.089%	7.573%	8.214%

Central Bank of Myanmar
Market Weighted Average Discount Rates at the Government of the Union of Myanmar Treasury Bill Auction
2019 October to 2020 July

